



GROWING DEEPER IN FAITH  
REACHING WIDER IN LOVE  
FIRST PRESBYTERIAN CHURCH OF SNOHOMISH

The Light | April | 2025

## Pastor's Corner

### Serving and Growing for God's Glory

*"I, the Lord, have called you in righteousness;  
I will take hold of your hand. I will keep you  
and will make you to be a covenant for the  
people and a light for the Gentiles, to open  
eyes that are blind, to free captives from  
prison, and to release from the dungeon  
those who sit in darkness. Isaiah 42:6-7*



Who is God calling us to love and serve? How is God inviting us to grow as people while doing this? These are two foundational and inseparable questions for us as God's children. From Abraham to the Israelites and the disciples, God has continually called people to follow Him in blessing other people. As the people followed, they became aware of areas in their life where they needed to grow. That's why it is so important to take time to spiritually reflect: to listen to God and draw near to Him for the love, grace, and encouragement that we need.

To that end, I am inviting everyone at FPCS to take 30 minutes this Lent to do a **Spiritual Health Reflection**. This is an online resource that will help you reflect on how God is calling you to grow as a follower of Jesus. The next page has step-by-step instructions to begin this time of reflection. I also encourage you to watch the video on the website which explains a little more about how this reflection can be valuable. Once you have completed the online reflection it will identify areas of growth for you to consider along with some great resources to help you do that.

I also encourage you to talk about your results with someone who will support you and pray for you as you take the next steps of faith. This might be people in a ConneXTion group or people in a ministry team with whom you are serving. How God calls us to serve and what we encounter along the way can be daunting. We need the support of one another! And thankfully God is with us to help and continually make us people who love like God loves us.

'You are my servant'; I have chosen you and have not rejected you. So do not fear, for I am with you; do not be dismayed, for I am your God. I will strengthen you and help you; I will uphold you with my righteous right hand. Isaiah 43:9b-10

Thankful to be serving and growing with you,

*Tom Dabazinskas*

Interim Pastor

[tom@snopres.org](mailto:tom@snopres.org)

#### **Pastor Tom's Schedule:**

Typical work week: Sunday - Thursday\*

In person meetings: Sunday, Tuesday, Wednesday

Personal day off and Sabbath: Friday and Saturday

\*I reply to emails on these days

If you have questions or need additional information,  
please contact the office.

[office@snopres.org](mailto:office@snopres.org) | 360-568-6498

Step 1)

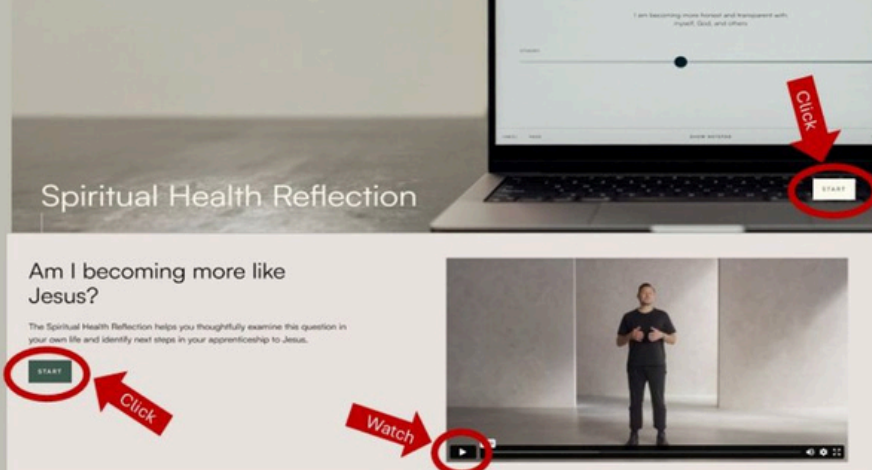
**Click** Go to: [www.practicingtheway.org/reflection](http://www.practicingtheway.org/reflection)



Step 2)

**Visit**

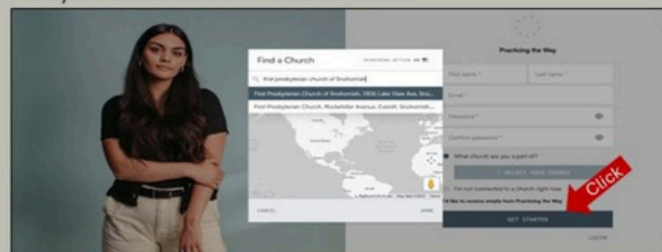
You are encouraged to click on **WATCH** to see a video with a brief introduction to the Reflection process. When you are ready to begin, click on either **START** button.



Step 3)

**Register**

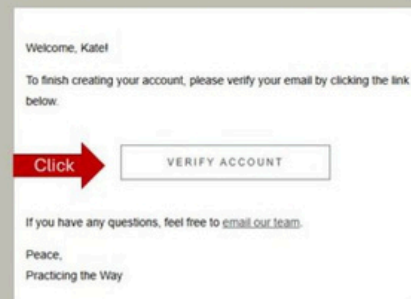
Fill in Name and Email, Create and Confirm a Password. Click on 'Select Your Church' and type in First Presbyterian Church of Snohomish. Click **GET STARTED**



Step 4)

**Verify**

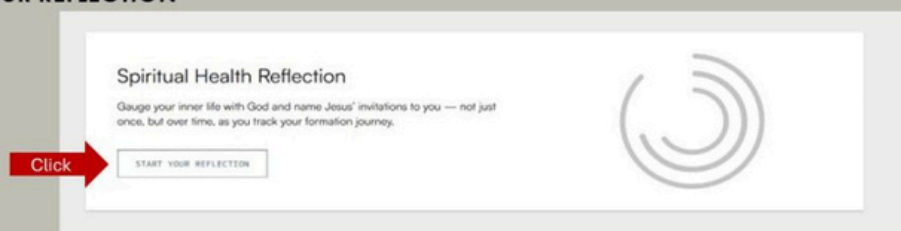
You will receive an email that looks like this. Click on **VERIFY ACCOUNT**



Step 5)

**Start Your Reflection**

The Spiritual Health Reflection is a questionnaire designed to help you gauge your inner life with God and the person you are becoming in Christ. We suggest taking the Reflection in a quiet, distraction free place, when you have the time to work through it slowly. Allow 20-30 minutes to answer the questions. When you are ready, click **START YOUR REFLECTION**



After you've finished the questions, you'll be provided with a visual overview of different aspects of your spiritual formation and suggestions for next steps. Also on that page is the option to **Download Results**. Please download your results to your computer. Watch What's Happening and the Light for next steps.

Thank you!



GROWING DEEPER IN FAITH  
REACHING WIDER IN LOVE

---

FIRST PRESBYTERIAN CHURCH OF SNOHOMISH

## **Charlie and Ann Lewis' Separation Agreement**

When pastors are no longer serving a church, it is important to have clear guidance about interactions after their departure. This allows the pastors to have a healthy transition into what God is calling them to next. It also allows the congregation to effectively move into their future years of ministry together.

Therefore Charlie and Ann Lewis, along with the Northwest Coast Presbytery, and the Session here at First Presbyterian Church of Snohomish have agreed to the following guidance:

- 1.Charlie and Ann will not participate in congregational worship, small groups, or fellowship events, nor offer pastoral support, counseling, or pastoral visits. These must appropriately end, in order for current leadership to establish their ministry to the congregation.
- 2.Charlie and Ann will not be officiating or assisting with any sacraments, weddings, or funerals connected with FPCS. Only the current pastor (interim or installed) may make exceptions to this.
- 3.Charlie and Ann will not be discussing or commenting on any church matters, particularly not offering opinion or criticism about the life of the congregation or performance of the pastor. Only positive and affirming words will be shared.
- 4.While the pastoral relationship has ended, friendships are priceless and continue to be cherished. However, it is best if the initiative for these friendship connections comes from the congregation member(s).
- 5.After a suitable period of time, the newly installed pastor, with concurrence of session and COM, may invite Charlie and Ann to return to the church as worshippers and participants.

If you have any questions about this guidance, please talk with a member of Session. Please also join me in prayer for the good that God has ahead for Charlie, Ann and FPCS!

*Tom Dabazinskas*

Interim Pastor

Pastor Charlie will be closing down his snopres.org email this month.  
His updated email address is:  
**[charielewisrunner@gmail.com](mailto:charielewisrunner@gmail.com)**



Your Stewardship Team would like to offer their sincere thanks to those of you who have already paid your Per Capita dues. Your payments are greatly appreciated. When members pay their Per Capita fee of \$60.00 it frees up additional funds for the church to be able to pursue other areas of ministry. We've already collected more than we'd expected, but that is less than half of the total amount we will pay over the course of the year. Your contributions allow the church to invest more of its resources into the ministries of the church and our community. If you have not yet paid your Per Capita dues, please consider doing so – just write Per Capita in the memo line or select the Per Capita category if you're giving online. Thank you!

**April 5, 2025  
7:00 - 9:00 pm**

**The Snohomish Community Kitchen invites you to attend the first Saturday Art Night at the Gallery at St. John's (913 2nd Street, Snohomish).**

**This show features Lillian's Garden Photography on Canvas by Carol Robinson.**

**Art sales to benefit the Snohomish Community Kitchen**

*Financial Update*

Year to date through February 2025 the Church received \$103,867 in total income, and had expenses of \$82,717 resulting in a net income of \$21,150 from operations, compared to an expected net income of \$13,175. The Statement of Activities compares the actual total income and expenses to the Annual Budget. The Assets Statement lists the Church's total cash and investments. The General Operating Account covers the monthly routine bills and salaries, while Investments are long-term in nature. They require Session approval to use. For questions or more information, contact Vicki at [Treasurer@SnoPres.org](mailto:Treasurer@SnoPres.org).

### Statement of Activities

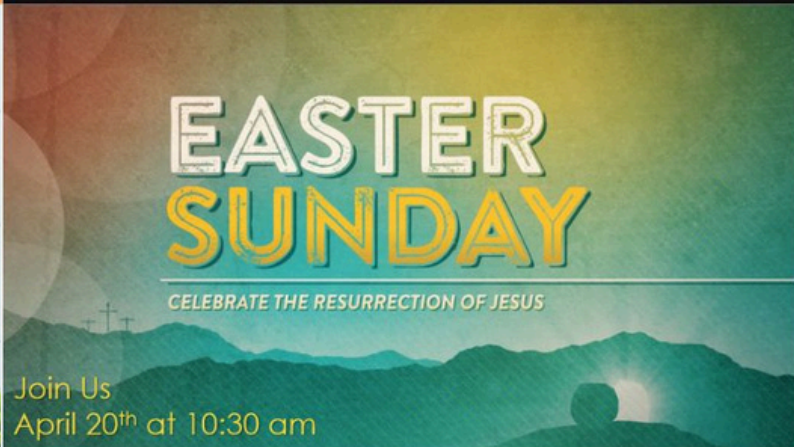
Year to Date Through February 2025

	YTD Actual	YTD Budget	Annual Budget
Ordinary Income/Expense			
Income			
Offerings	\$ 91,568	89,088	\$ 492,645
PerCapita Collections	6,160	4,300	4,800
Other Income & Gifts	6,139	4,333	23,650
Total Income	103,867	97,721	521,095
Total Expense	82,717	84,546	557,611
Net Ordinary Income	\$ 21,150	\$ 13,175	\$ (36,516)

### Assets as of February 28, 2025

	As of Feb 28, 2025	As of Feb 2024, 2024 (PY)
Assets		
General Operating Account	\$ 227,119	\$ 203,777
Other Assets	34,518	45,515
Total current assets	261,637	249,292
Investments		
General Fund - Unrestricted	437,881	411,746
General Fund - Restricted	498,280	450,294
Scholarship Endowment Funds	242,521	248,029
Total Investments	1,178,682	1,110,070
Total Assets	\$ 1,440,319	\$ 1,359,362









## YOUTH GROUP

Our Middle and High School students meet on Wednesdays from 5-7pm. We have moved our meetings back to the church. Come with some ideas for Service Projects, Social Ideas, Activities, and Menu Suggestions. We will be planning and making our own meals each week (at least in part). We look forward to seeing you and your friends. Questions? Email [youth@snopres.org](mailto:youth@snopres.org)



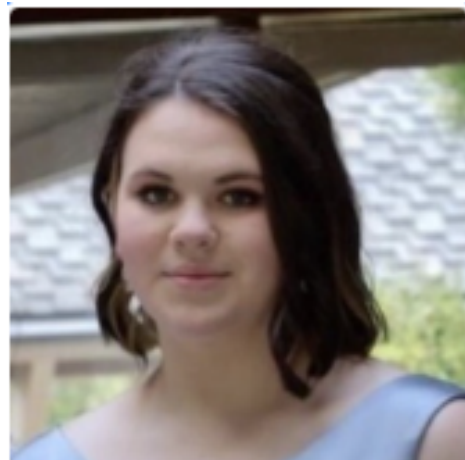
April 5th 7pm  
April 6th 2pm

# THE IMPORTANCE OF BEING EARNEST

ADULTS \$15  
CHILDREN \$10



Performed by the Stellar Players  
Directed by Josias Allestad



**Riley Boerger**

Our very own Riley Boerger is stepping onto the boards in the Stellar Players' production of Oscar Wilde's 'The Importance of Being Earnest'. Performances will be held at the Tim Noah Thumbnail Theater  
1211 4th Street, Snohomish  
Scan the QR code for tickets!

## Women's Ministry

### Book Club

The book club will meet at 12:00 noon on Wednesday, April 9, 2025, and share a potluck salad at the home of Dede Babcock.

Questions? Call Carol Johnson at 205-595-9462 or email Carol at [cjohnson98290@gmail.com](mailto:cjohnson98290@gmail.com)



### **THANK YOU!**

We collected 24 pints of blood at the Spring Blood Drive on Friday, March 7th. Mark your calendars: our Fall Blood Drive will be held in September.

## April Memorial Services

This month, we will celebrate the lives of two of the saints who have recently left us.



Kathleen  
Hansen

Thursday  
April 24th  
1:00 pm

Marguerite  
Simpson

Sunday  
April 27th  
2:00 pm



Dear Church Family,

As I complete two weeks of healing following my hip replacement, I am encouraged by the incredible love and support you have sent my way. From delicious meals to phone calls, visits, cards, and prayers, you have brightened my days.

My new hip is settling in well. To borrow the words of our dear Audrey, "Hip, hip, hooray"! I look forward to joining you at church in the next two weeks or so.

As I "Praise God from whom all blessings flow", I'm soul deep grateful for His love and the constant love of my church family.

See you soon,  
MaryLee







Ladies! You are cordially invited to join us and celebrate  
**"May in Bloom"**  
our annual Ladies Tea hosted by Women's Ministries,  
on Saturday, May 3rd in the Lake View Hall from 11:30 to 2:30.

You will indulge in a scrumptious light lunch with tea, and play some games and sing as you share in fellowship. Prizes will be given throughout the tea.

The yearly tradition of a Hat Parade and Competition will complete the fun.

Categories for the hats will consist of:

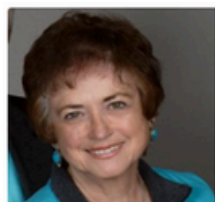
- The Spirit of Spring
- Most Glamorous
- Silliest
- Most Unique/ Creative
- and, new this year, young ladies from ages 5 to 12 can compete in their own 'Most Creative' category!

Please sign up by Sunday, April 27th. If you have questions, contact Linda Mueller at 425-299-3633



# MEET YOUR SESSION, COMMITTEE & MINISTRY TEAM LEADERS!

## SESSION



Dede Babcock  
2025



Marita Bishop  
2025



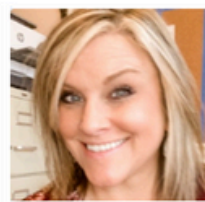
Curt Green  
2026



Carol Mastrofina  
2026



Julie Reynolds  
2026



Marlie Bilbruck  
2027



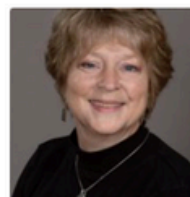
Mary Beth Kurtenbach  
2027



Phil Prins  
2027



Tom Dabasinkas  
Interim Pastor



Carlene Crossman  
Clerk



Vicki Hesseltine  
Treasurer

## COMMITTEES



Cris Kennedy  
Building &  
Grounds



Jim Kassebaum  
Finance



Carlene Crossman  
Governance



Lara Blasko & Hillary Lamb  
Personnel

## MINISTRY TEAMS



Jeanne Hoek  
Assistance for  
Refugees



Philomene Prihoda  
Community Life



Marge Bryan  
Congregational  
Care



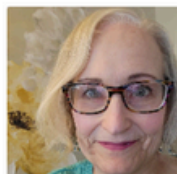
Jon Bishop  
ConneXtion  
Groups/Spiritual  
Formation



Jon McKenzie  
Endowment



Heidi Saikaly  
Mission



Sue Davis  
Prayers &  
Squares



Jean Hunter  
Stephen  
Ministry



Polly Fox  
Stewardship



Linda Mueller  
Women's  
Ministry



Anna Thelen  
Worship



Shelagh Hizzey  
Youth & Family



## Remember in your prayers...

### Church Family Members

- Debby Ingram - treatment for multiple myeloma
- Patrick Ingram - as he recovers at home
- Lori Warren - hospitalized after falling
- Sara Seiber - treatment for cancer
- Shelagh Hizey - cancer treatment
- Caregivers for these and other church family members
- Mary Beth Kurtenbach as she continues to recover from foot surgery which is taking much longer than they had anticipated
- Sue Davis in the loss of her mother
- Charlie and Ann, in time of transition
- Talea Blasko and her work with the youth group
- Notehelfer family in the loss of Peter
- Marcia Moser who is dealing with health issues and transitioning to a new apartment due to flooding

### Homebound

Gary Gloe, Josh Hesseltine, Rosemary Bailey, Elaine and Dick Sundman, Marilyn de Soto, Barb Holmes, Carolyn Moss, Jerry Williamson (hospice) and Bill Barker



### Friends of FPCS

- Tamara Montoya, friend of Lise Pettigrew
- Sue Davis' daughter-in-law, Tammy, with non-Hodgkin's lymphoma
- Valerie Christopherson (sister-in-law of Marlie Bilbruck) for cancer metastasized to the liver
- Cynthia Sundman, missionary in Peru
- Pastor Moses & Margaret Tanni in Cameroon
- Cindy Duncan - Jan Gavin's niece - Stage 4 renal cell carcinoma with metastasis to the brain - doing a little better following recent treatment

### Ongoing Prayer Support

- Prayers for peace where there is war and turmoil: Israel, Palestine/Gaza, Lebanon, Ukraine, Russia, Sudan, Syria, Afghanistan, Yemen, Haiti, and many other places
- All refugees forced to leave their homes due to violence or natural disasters; all those left homeless, and those experiencing hunger such as in Tigray region of Ethiopia and Sudan
- Global leaders--for wisdom, and the will and courage to act justly, and to uphold human rights

### JOIN US!

**You are invited to join our small group where we are focused on prayer. We would happily welcome you to our Tuesday prayer team, which meets weekly at 11:15 am to pray for our church, community, and world. Questions?? Call Myrna Lucas @ (425)422-2489, Paula Erickson @ (425)220-2720, or Carolyn Mather-Greenberg @ (360)568-7128.**

*"Prayer is the link that connects us to God."*

**And pray in the Spirit on all occasions with all kinds of prayers and requests. With this in mind, be alert and always keep on praying for all the Lord's people.**

**Ephesians 6:18**





## **Deacon's Offering:** **First Sunday of Every Month**

The first Sunday of each month is Deacon's Offering Sunday, and you can put a donation marked "Deacons" in the offering plate or go to SnoPres Online and designate a donation to the Deacon's Fund. The Deacons thank YOU and those we help also thank you!

## **Need a Hand, Lend a Hand**

What is it? This program is an outreach of the Deacons. It provides a means for members to make requests for assistance, or offer assistance in a variety of ways. This could include things such as changing a light bulb in a hard-to-reach area, helping to move a microwave, or maybe helping with a tree that has fallen during a storm. We are in the process of moving the request online, so if you have a need we may be able to assist with, just call the office and we will see what we can do! 360-568-6498.

In the meantime, if you would like to be placed on the list of potential hand-lenders, please let the office know as well.



## **Deacon's Transportation Ministry:** **Do You Need a Ride?**

If you can't drive yourself, we can give you a lift. We can take you to a doctor or dentist appointment, to our church on Sunday, or for a church event. When you need a ride and you have run out of options, just call the office and we will see what we can do! 360-568-6498

### **Church Library**

To see a listing of all the books in the library, go to our online catalog:

<https://www.librarything.com/profile/FPCS>  
or follow the QR code to our links library.



## **Click or Scan**



## **One QR Code to Save Them ALL!**

If you're looking for it, you'll probably find a link to it [HERE](#) or scan the QR code. Not finding what you want? Please let the office know:

[office@sno-pres.org](mailto:office@sno-pres.org)